

pictured: aluminum louver

FlowGrill louvers are developed for extreme circumstances and available in different designs, many functional executions and additional options.

features SR4400:

- applicable in maritime environment
- maintenance friendly
- small build-in depth
- simple installation
- various shapes possible

options:

- watertrap
- demister
- stormshutter
- sprayshutter

material:

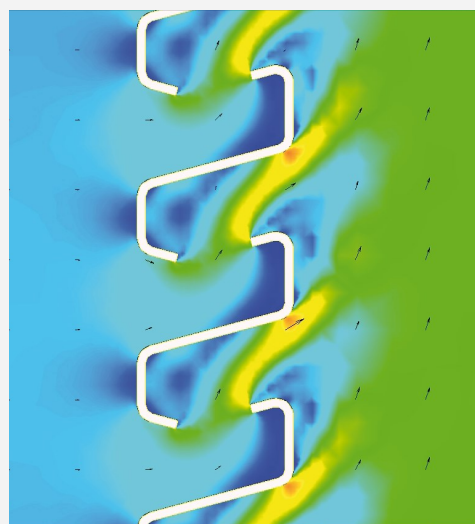
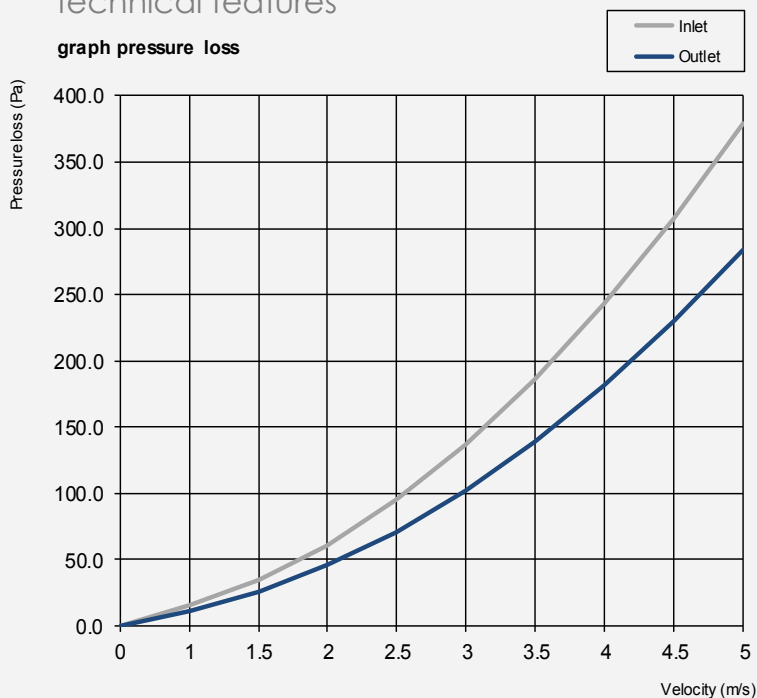
- aluminium (AlMg3)
- stainless steel (316L)
- special material on request

frame type:

- weld in frame (AlMg3, 316L)
- glue in frame
- bolted frame
- support construction
- tailor made

technical features

graph pressure loss



EFD simulation

- blade pitch 48 [mm]
- blade depth 45 [mm]
- min. built-in depth 73 [mm] (louver only)